

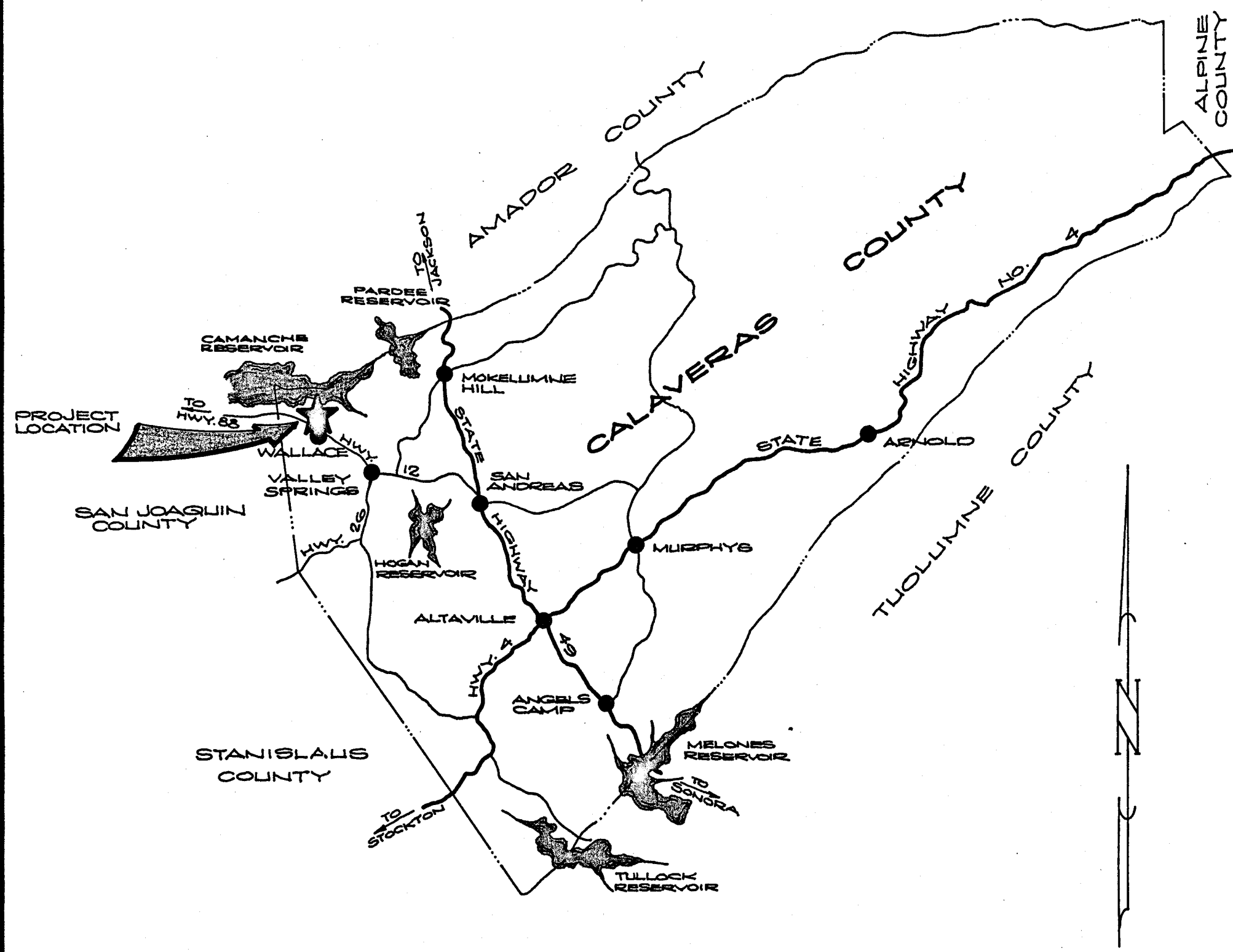
CONSTRUCTION PLANS FOR WALLACE LAKE ESTATES UNIT NO. 1

IMPROVEMENTS

OWNER - DEVELOPER
G. M. WINCHELL & SONS, INC.

INDEX OF SHEETS

- | | |
|---------------------------------------------------------------------------------------------------------------------------------------------------------------------------------------------------------------------------------------------------------------------------------------------------------------------------------------------------------------------------------------------------------------------------------------------------------------------|----------------------------------------------------------------------------------------------------------------------------------------------------------------------------------------------------------------------------------------------------------------------------------------------|
| <ul style="list-style-type: none"> 1 COVER SHEET 2 KEY PLAN 3 STATE HIGHWAY 12 4 CAMANCHE PARKWAY 5 WALLACE LAKE DRIVE NORTH 6 WALLACE LAKE DRIVE 7 GOSHAWK COURT - WILLET COURT 8 W.L.D. SO. - TEAL COURT - CHUKAR COURT 9 WALLACE LAKE DRIVE 10 CORMORANT - VERDIN - TURNSTONE 11 PROFILES 12 WALLACE LAKE DRIVE SOUTH 13 ROAD DETAILS | <ul style="list-style-type: none"> X-1 THRU X-10 ROAD CROSS SECTIONS S-1 THRU S-8 SEWER IMPROVEMENTS
TREATMENT & PUMP STATION UNDER SEPARATE COVER W-1 THRU W-4 WATER IMPROVEMENTS
FUTURE PLANT UNDER SEPARATE COVER D-1 DRAINAGE PLAN |
|---------------------------------------------------------------------------------------------------------------------------------------------------------------------------------------------------------------------------------------------------------------------------------------------------------------------------------------------------------------------------------------------------------------------------------------------------------------------|----------------------------------------------------------------------------------------------------------------------------------------------------------------------------------------------------------------------------------------------------------------------------------------------|



LOCATION MAP

AS CONSTRUCTED

DRAWN BY: R.S.	CHECKED: <i>[Signature]</i>	C. E. NO. 14774	REVISION	DATE	DESCRIPTION	BY	APPD.
SUBMITTED BY: <i>[Signature]</i>			EXPIRES 3-31-89				

WEATHERBY ASSOCIATES INC.
ENGINEERING - SURVEYING - PLANNING
206 Park Street, Jackson, CA. 95642
209-223-0381 209-754-1137

WALLACE LAKE ESTATES
UNIT NO. 1
CALAVERAS COUNTY, CALIFORNIA
COVER SHEET

SCALE: NONE	DATE: 2-18-88
FILE NO. D-3345	SHEET 1 OF 12

DIETRICH-POST REORDER NO. 12218

UNIT NO. 1 PROJECT SUMMARY

159.2 ACRES

- 101 R-1 LOTS (LOTS 1-22, 26-97, 99-105)
- 2 R-3 " (LOTS 23 & 24)
- 2 COMMERCIAL (LOTS 106 & 107)
- 6 OPEN SPACE AREAS
- 1 DEDICATED LOT
- 1 PUBLIC SERVICE LOT
- 2 FUTURE SUB'D.

STREET SIGNS AS INDICATED ON PLAN - PROFILE SHEETS.

- (A) STOP
- (B) STREET NAME
- (C) NOT A THRU STREET
- (D) SPEED LIMIT

LEGEND

----- INDICATES PEDESTRIAN PATHWAY

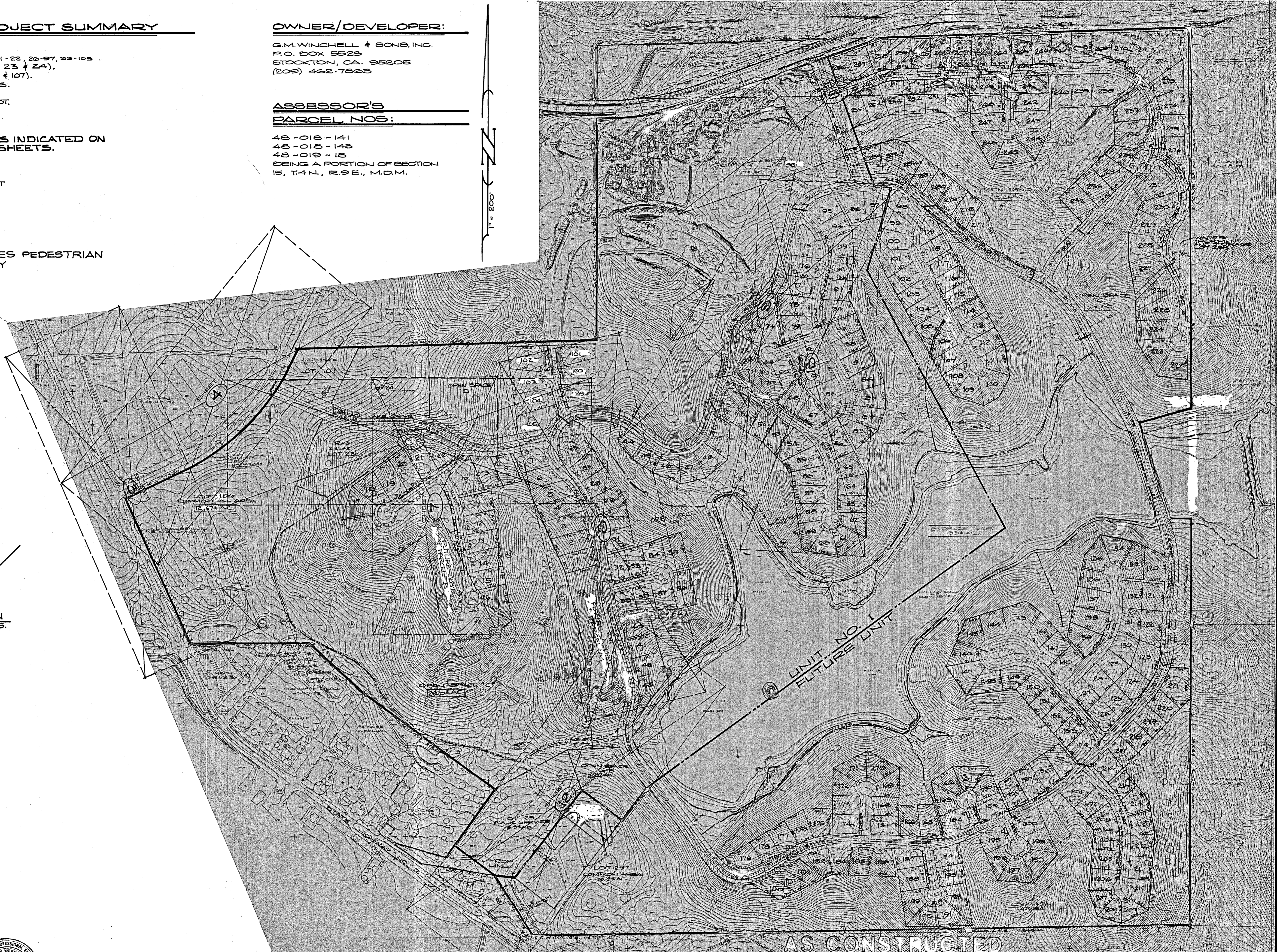
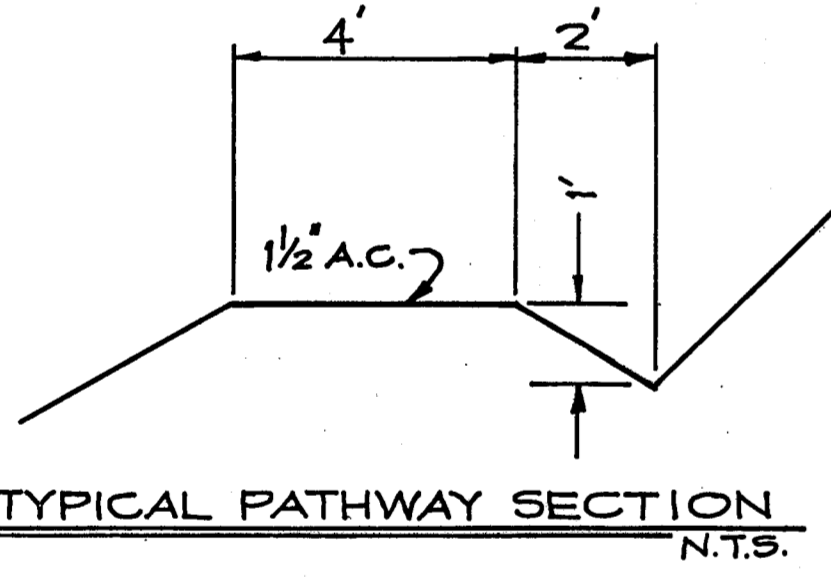
OWNER/DEVELOPER:

G.M. WINCHELL & SONS, INC.
P.O. BOX 5523
STOCKTON, CA. 95205
(209) 462-7888

ASSESSOR'S

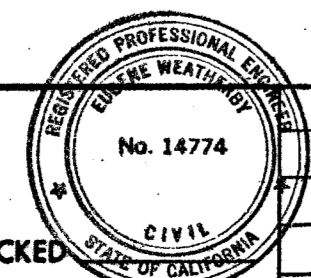
PARCEL NOS:

48-018-141
48-018-148
48-019-18
BEING A PORTION OF SECTION 15, T.4N., R.9E., M.D.M.



AS CONSTRUCTED

WALLACE LAKE ESTATES
UNIT NO. 1
CALAVERAS COUNTY, CALIFORNIA
KEY PLAN



DRAWN BY: R.S.

CHECKED: [Signature]

SUBMITTED BY: [Signature] C.E. NO. 14774

EXPIRES: 3-31-89

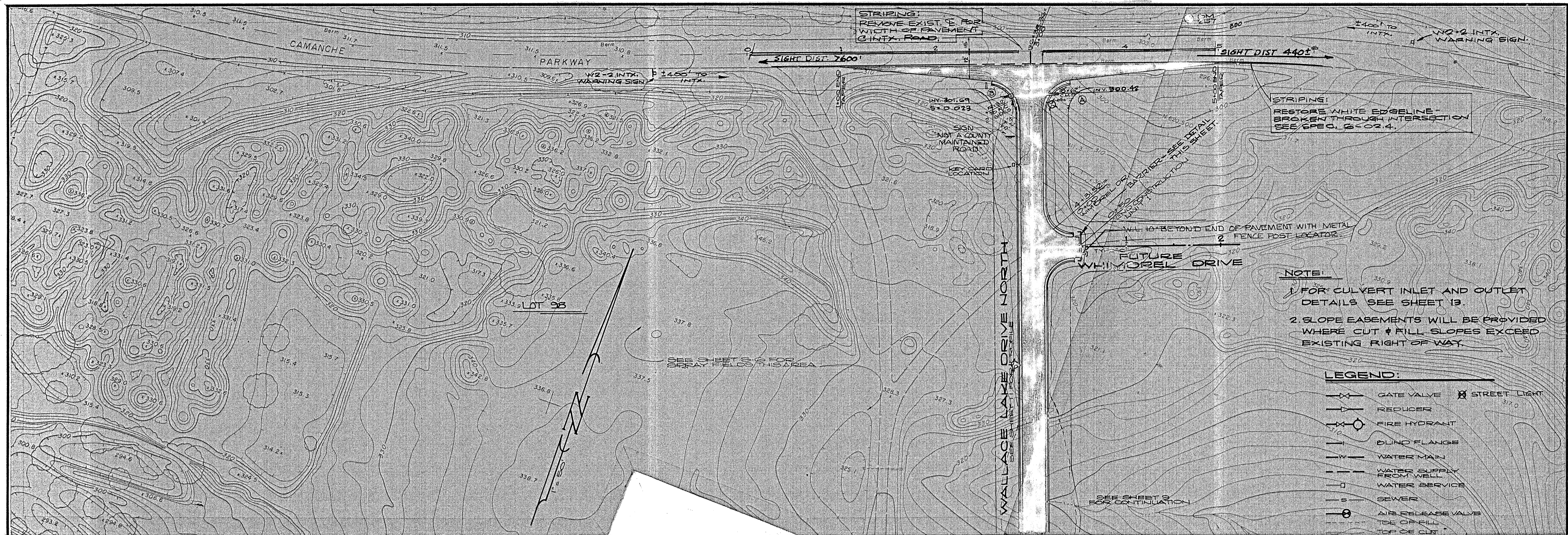
REVISION	DATE	DESCRIPTION	BY	APPD.
1	4/3/81	LOT NOS - UNIT 1 UPDATE	[Signature]	



WEATHERBY ASSOCIATES INC.
ENGINEERING - SURVEYING - PLANNING
206 Peck Street, Jackson, CA. 95642
209-223-0381 209-754-1137

DATE	2-18-88
SHEET	2
FILE NO.	D-8345
OF 12	

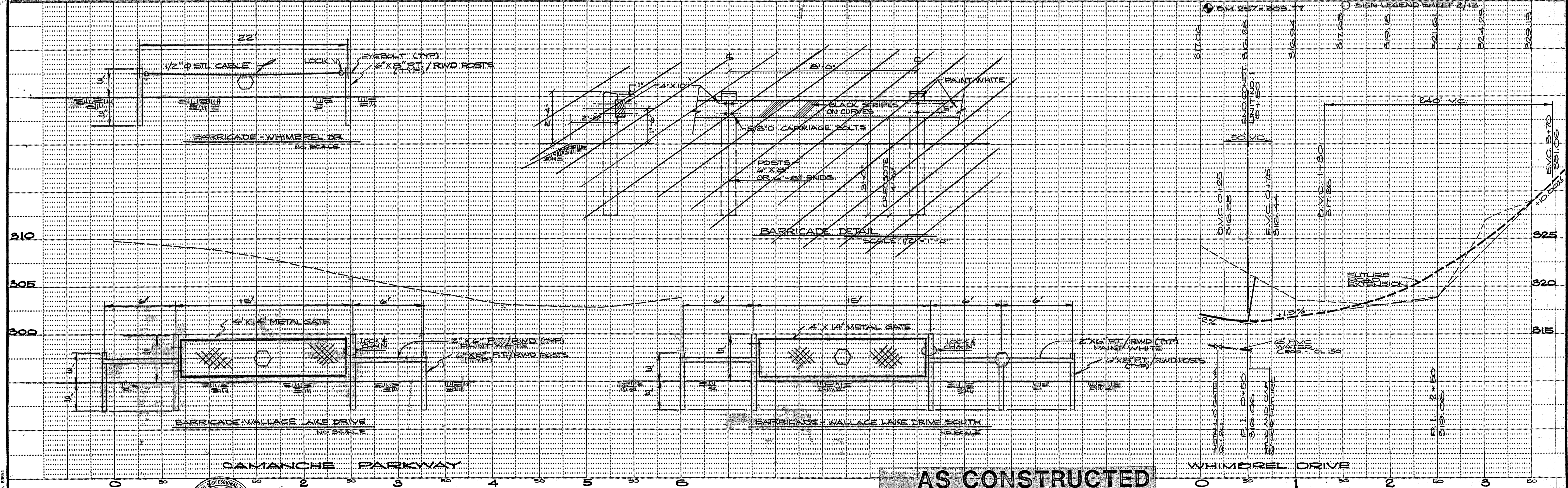
DIETRICH-POST REGISTER, NO. 82918



NOTE:
 1 FOR CULVERT INLET AND OUTLET DETAILS SEE SHEET 13
 2 SLOPE EASEMENTS WILL BE PROVIDED WHERE CUT & FILL SLOPES EXCEED EXISTING RIGHT OF WAY

LEGEND:

	GATE VALVE		STREET LIGHT
	REDUCER		
	FIRE HYDRANT		
	BLIND FLANGE		
	WATER MAIN		
	WATER SUPPLY FROM WELL		
	WATER SERVICE		
	SEWER		
	AIR RELEASE VALVE		
	TOP OF CUT		



AS CONSTRUCTED

PREPARED BY: _____

DRAWN BY: R.S. CHECKED: _____

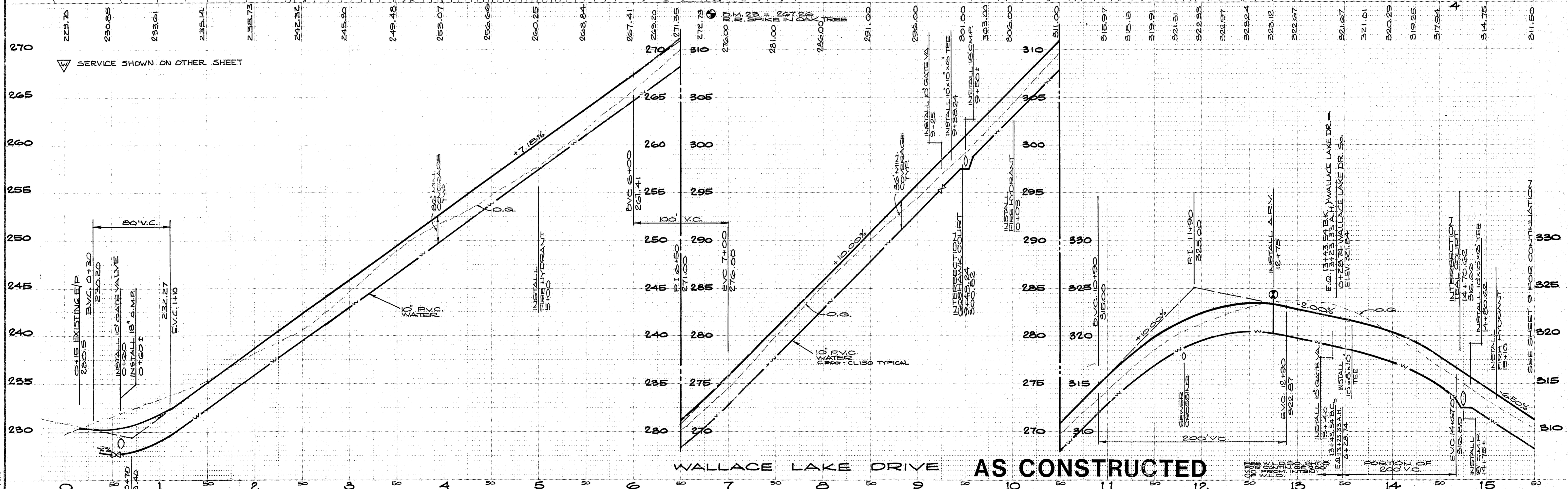
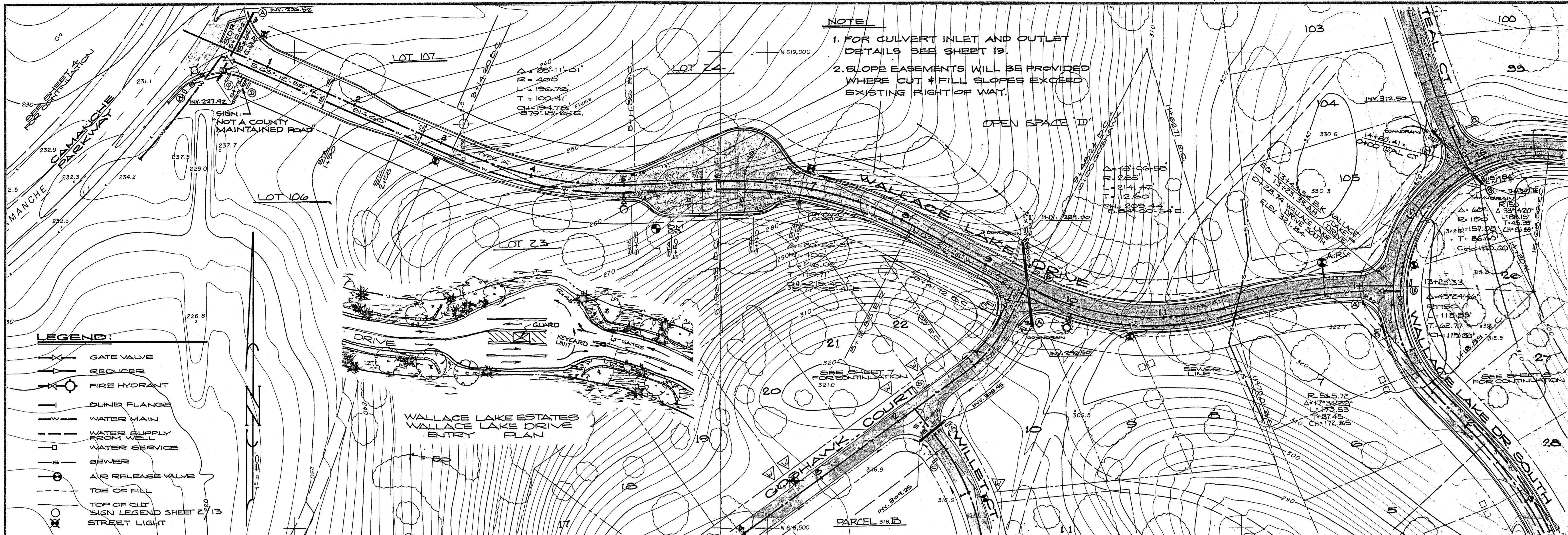
SUBMITTED BY: [Signature] C.E. NO. 14774 EXPIRES: 2-31-89

REVISION	DATE	DESCRIPTION	BY	APPD.
1	5/23/91	REV. STRIPING PER O.C.	GR	
2	4/8/91	AS CONSTRUCTED	RH	

WEATHERBY ASSOCIATES INC.
 ENGINEERING - SURVEYING - PLANNING
 206 Peak Street, Jackson, CA. 95642
 209-223-0381 209-714-1137

WALLACE LAKE ESTATES
UNIT NO. 1
 CALAVERAS COUNTY, CALIFORNIA
WALLACE LAKE DRIVE NORTH

DATE	2-18-88
SHEET	5
OF 13	
SCALE	1" = 50' HORIZ. 1" = 5' VERT.
FILE NO.	D-3345



PREPARED BY:					
DRAWN BY:	R.S.	CHECKED:			
SUBMITTED BY:	C. E. NO. 14774		REVISION	DATE	DESCRIPTION
		EXPIRES 2-31-89	4/10/91	AS CONSTRUCTED	RH

WEATHERBY ASSOCIATES INC.
 ENGINEERING - SURVEYING - PLANNING
 206 Peek Street, Jackson, CA. 95642
 209-223-0381 209-714-1137

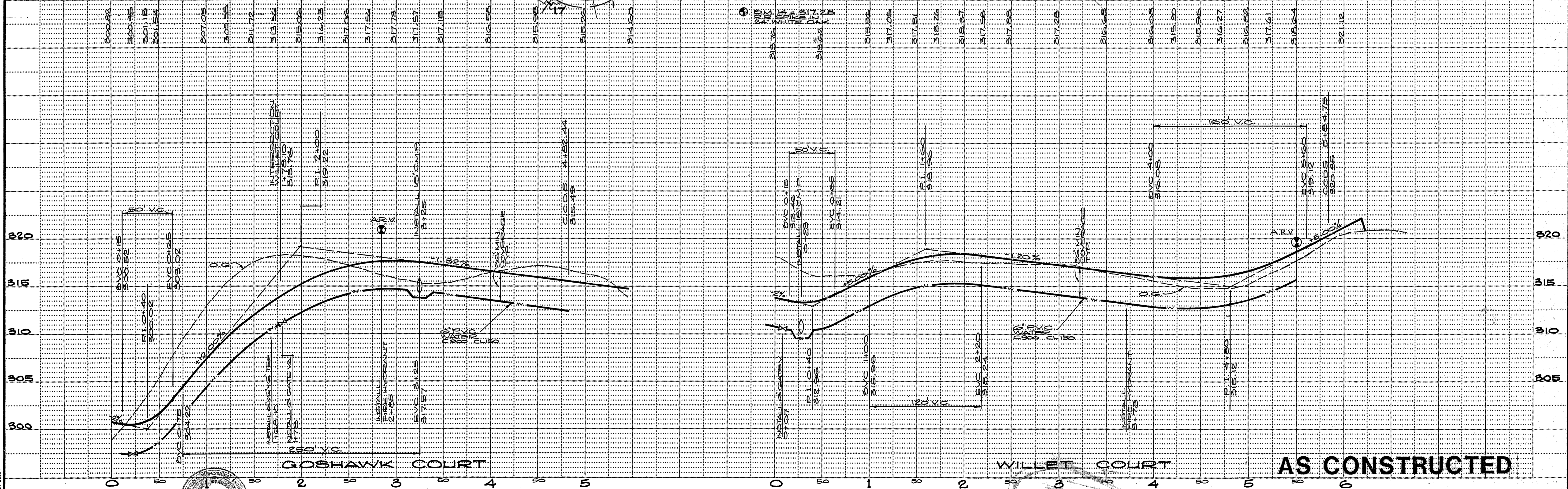
**WALLACE LAKE ESTATES
 UNIT NO. 1
 CALAVERAS COUNTY, CALIFORNIA
 WALLACE LAKE DRIVE**

DATE: 2-16-88
 SHEET: 6
 SCALE: 1" = 50' HORIZ., 1" = 5' VERT.
 FILE NO.: D-3345
 OF 13



- LEGEND:**
- GATE VALVE
 - REDUCER
 - FIRE HYDRANT
 - BLIND FLANGE
 - WATER MAIN
 - WATER SUPPLY FROM WELL
 - WATER SERVICE
 - SEWER
 - AIR RELEASE VALVE
 - TOE OF FILL
 - TOP OF CUT
- SIGN LEGEND SHEET 2/13
 ✕ STREET LIGHT

- NOTE:**
1. FOR CULVERT INLET AND OUTLET DETAILS SEE SHEET 13.
 2. SLOPE EASEMENTS WILL BE PROVIDED WHERE CUT & FILL SLOPES EXCEED EXISTING RIGHT OF WAY.



PREPARED BY: _____

DRAWN BY: R.S. CHECKED: _____

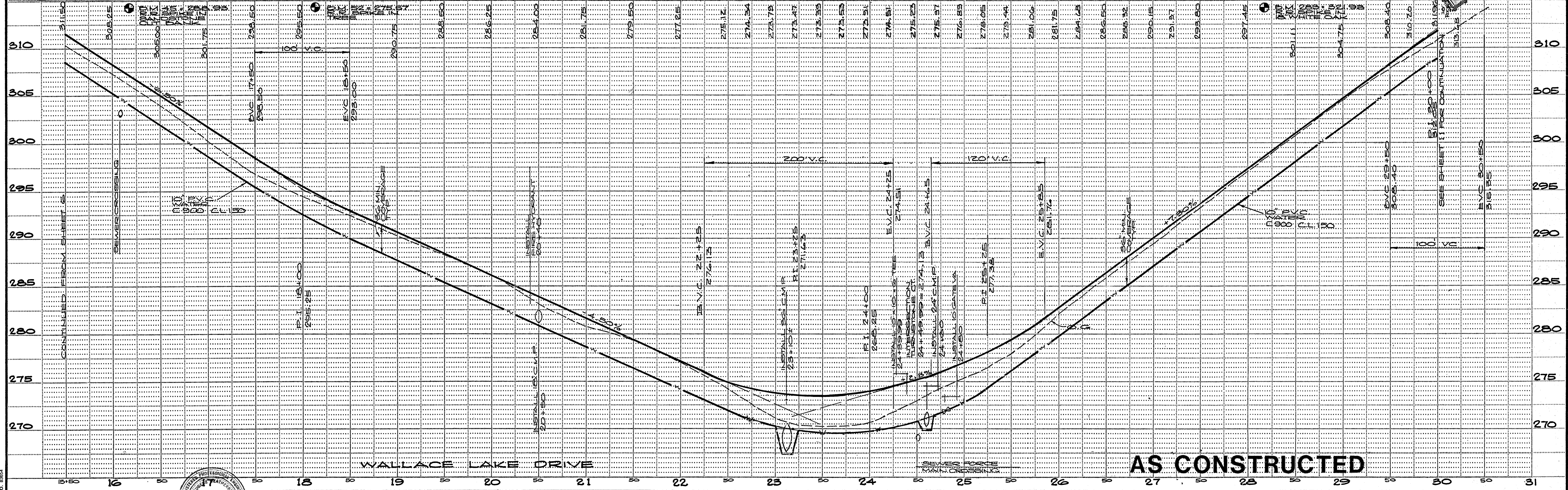
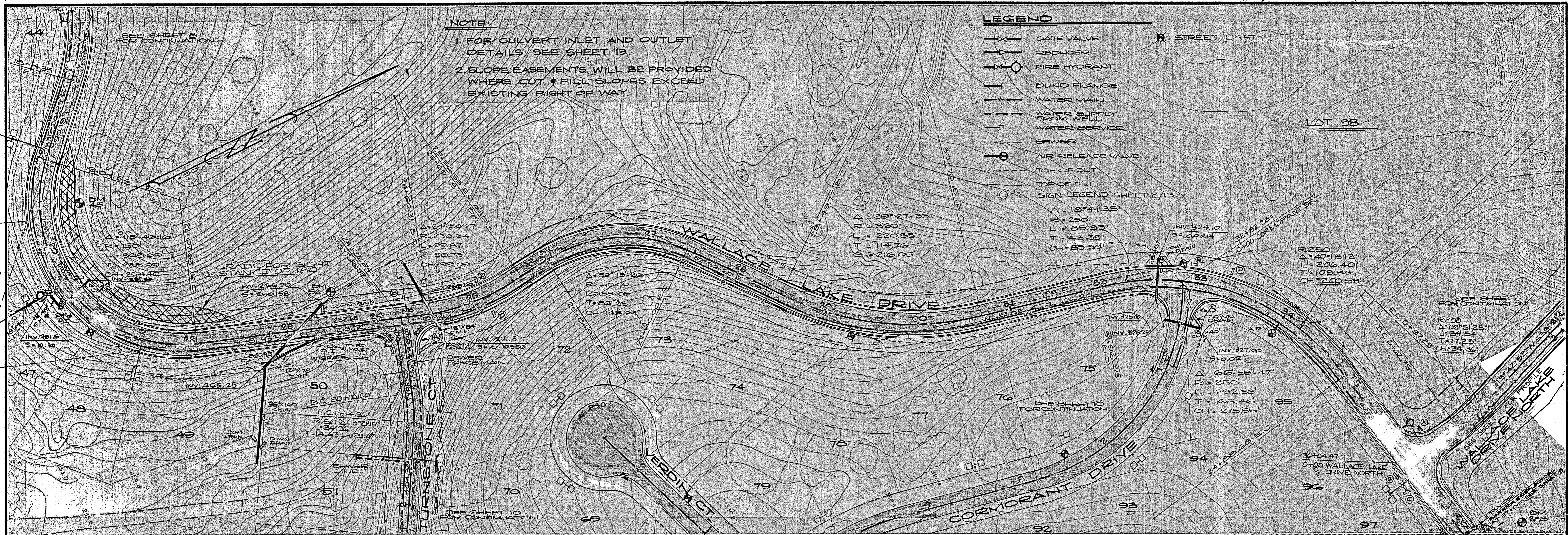
SUBMITTED BY: Weatherby Associates Inc. C.E. NO. 14774 EXPIRES 3-21-89

REVISION	DATE	DESCRIPTION	BY	APPD.
1	4/01/81	AS CONSTRUCTED	RH	

WEATHERBY ASSOCIATES INC.
 ENGINEERING - SURVEYING - PLANNING
 206 Peek Street, Jackson, CA. 95642
 209-223-0381 209-754-1137

**WALLACE LAKE ESTATES
 UNIT NO. 1**
 CALAVERAS COUNTY, CALIFORNIA
GOSHAWK COURT - WILLET COURT

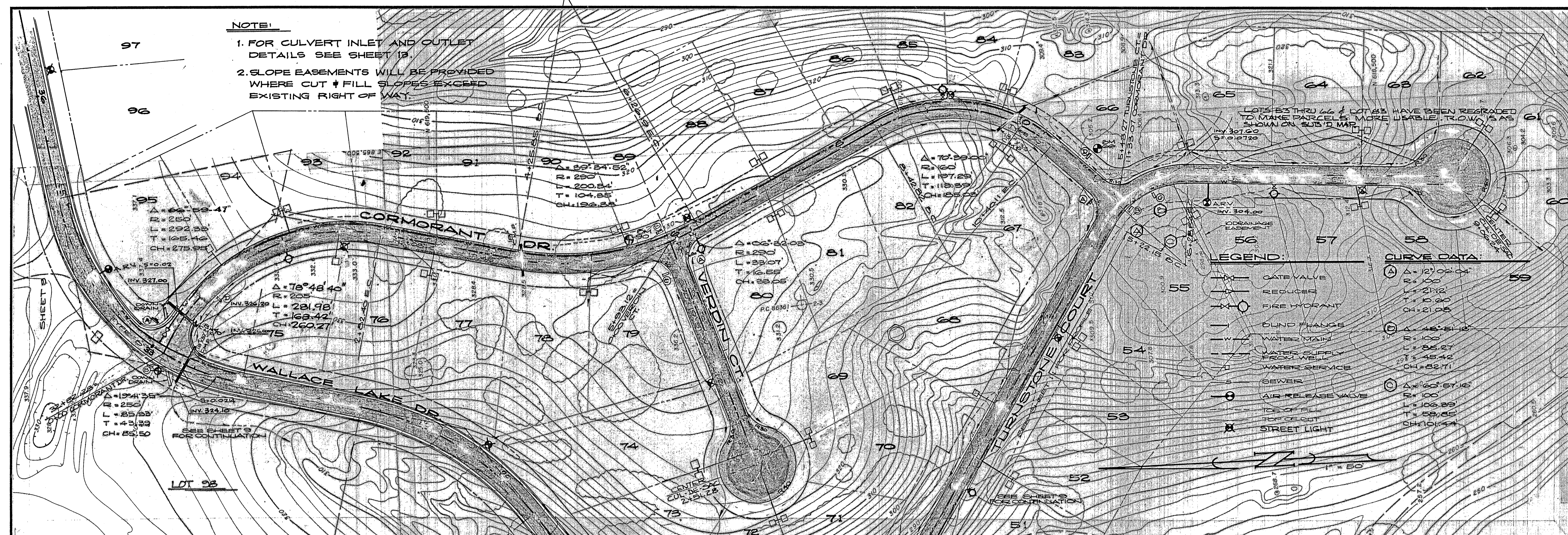
DATE 2-10-88
SHEET 7
OF 13
SCALE: 1" = 50' HORIZ. 1" = 5' VERT.
FILE NO. <u>D-3345</u>



PREPARED BY: DRAWN BY: <u>R.S.</u> CHECKED: <u>[Signature]</u> SUBMITTED BY: <u>[Signature]</u> C.E. NO. <u>4172</u> EXPIRES: <u>5-31-89</u>	No. 14774 CIVIL STATE OF CALIFORNIA 4/18/81 AS CONSTRUCTED REVISION DATE DESCRIPTION BY APPD.	WEATHERBY ASSOCIATES INC. ENGINEERING - SURVEYING - PLANNING 206 Peak Street, Jackson, CA. 95642 209-223-0381 209-754-1137	WALLACE LAKE ESTATES UNIT NO. 1 CALAVERAS COUNTY, CALIFORNIA WALLACE LAKE DRIVE	DATE: 2-18-88 SHEET: 9 OF 15 SCALE: 1" = 50' HORIZ. 1" = 5' VERT. FILE NO. D-3345
-------------------------------------------------------------------------------------------------------------------------------------------------------	-----------------------------------------------------------------------------------------------------------	--------------------------------------------------------------------------------------------------------------------------------------------	---------------------------------------------------------------------------------------------------------------	---------------------------------------------------------------------------------------------------------

NOTE:

1. FOR CULVERT INLET AND OUTLET DETAILS SEE SHEET 13
2. SLOPE EASEMENTS WILL BE PROVIDED WHERE CUT & FILL SLOPES EXCEED EXISTING RIGHT OF WAY

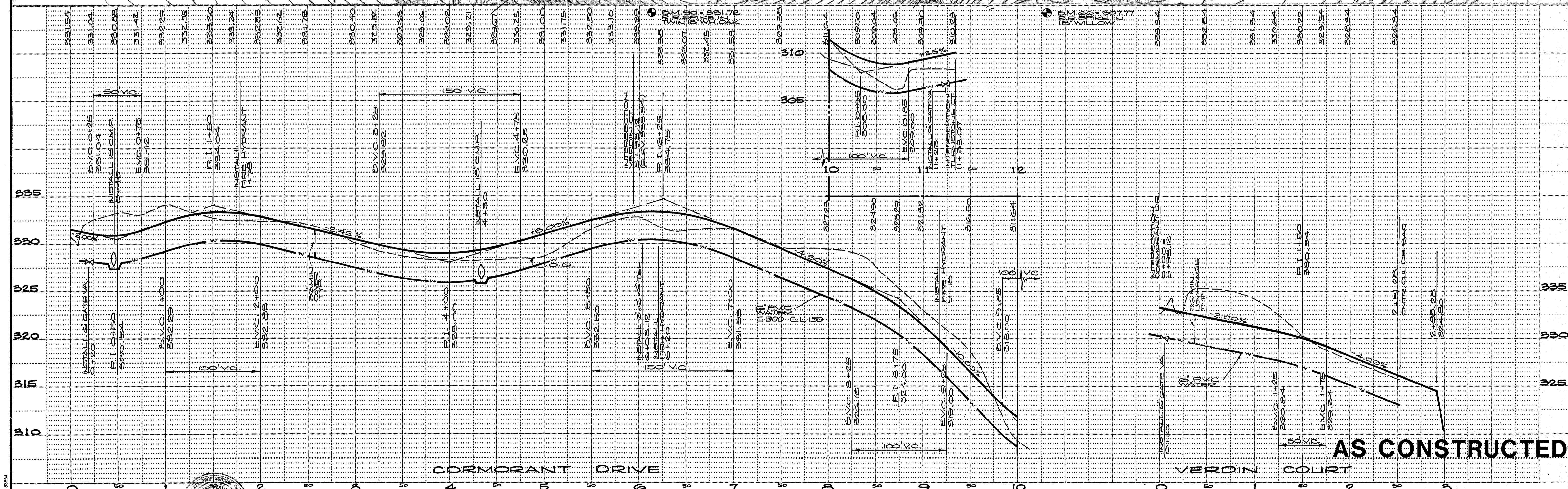


LEGEND:

- GATE VALVE
- REDUCER
- FIRE HYDRANT
- BLIND FLANGE
- WATER MAIN
- WATER SUPPLY FROM WELL
- WATER SERVICE
- SEWER
- AIR RELEASE VALVE
- TOP OF CUT
- STREET LIGHT

CURVE DATA:

(A) $\Delta = 129^{\circ}02'04''$	$R = 100$
$L = 21.12'$	$T = 0.80'$
$CH = 21.06'$	
(B) $\Delta = 48^{\circ}51'16''$	$R = 100$
$L = 8.57'$	$T = 45.42'$
$CH = 82.71'$	
(C) $\Delta = 63^{\circ}57'16''$	$R = 100$
$L = 10.63'$	$T = 58.65'$
$CH = 104.44'$	



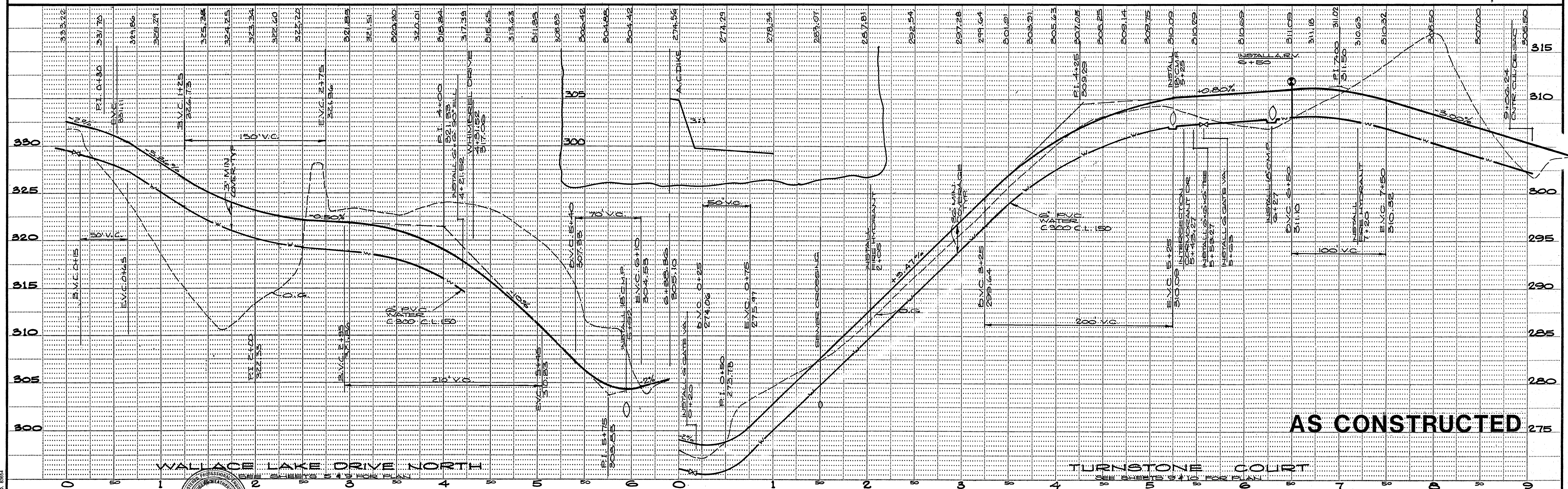
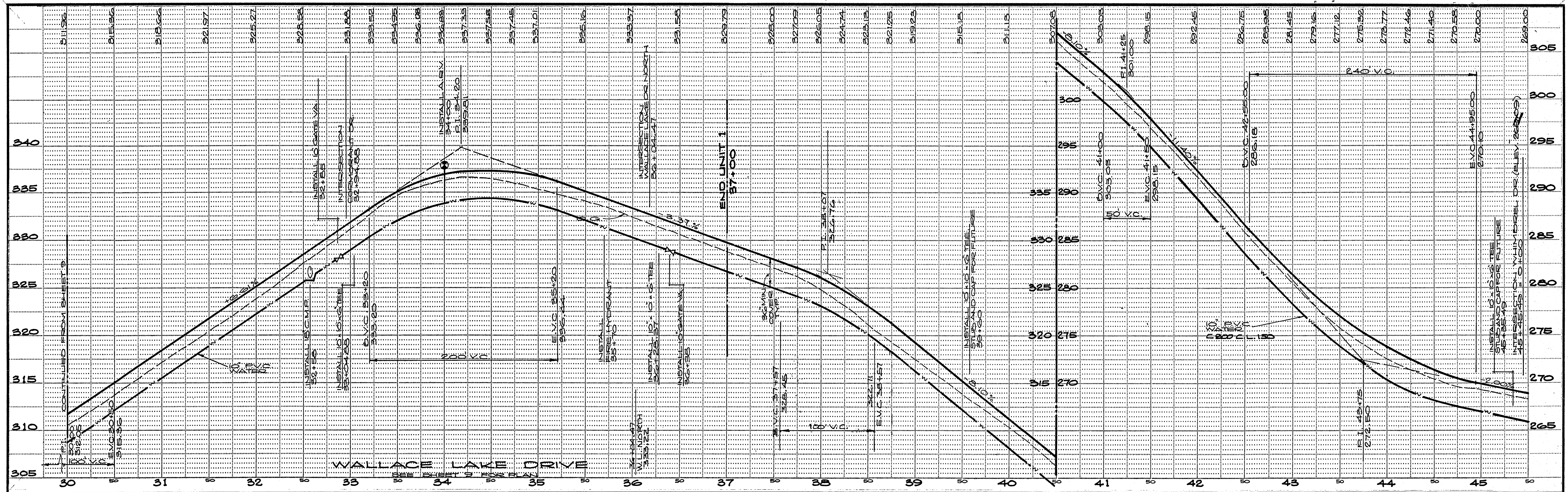
PREPARED BY: _____
 DRAWN BY: R.S. CHECKED: _____
 SUBMITTED BY: _____
 C.E. NO. 14774
 EXPIRES: 5-31-89

REVISION	DATE	DESCRIPTION	BY	APPD.
1	4/8/91	AS CONSTRUCTED	RH	

WEATHERBY ASSOCIATES INC.
 ENGINEERING - SURVEYING - PLANNING
 206 Peek Street, Jackson, CA. 95642
 209-733-0381 209-754-1137

**WALLACE LAKE ESTATES
 UNIT NO. 1**
 CALAVERAS COUNTY, CALIFORNIA
 CORMORANT - VERDINE - TURNSTONE

DATE: 2-16-88
 SCALE: 1" = 50' HORIZ.
 1" = 5' VERT.
 SHEET: 10
 FILE NO. D-3345
 OF 13



AS CONSTRUCTED

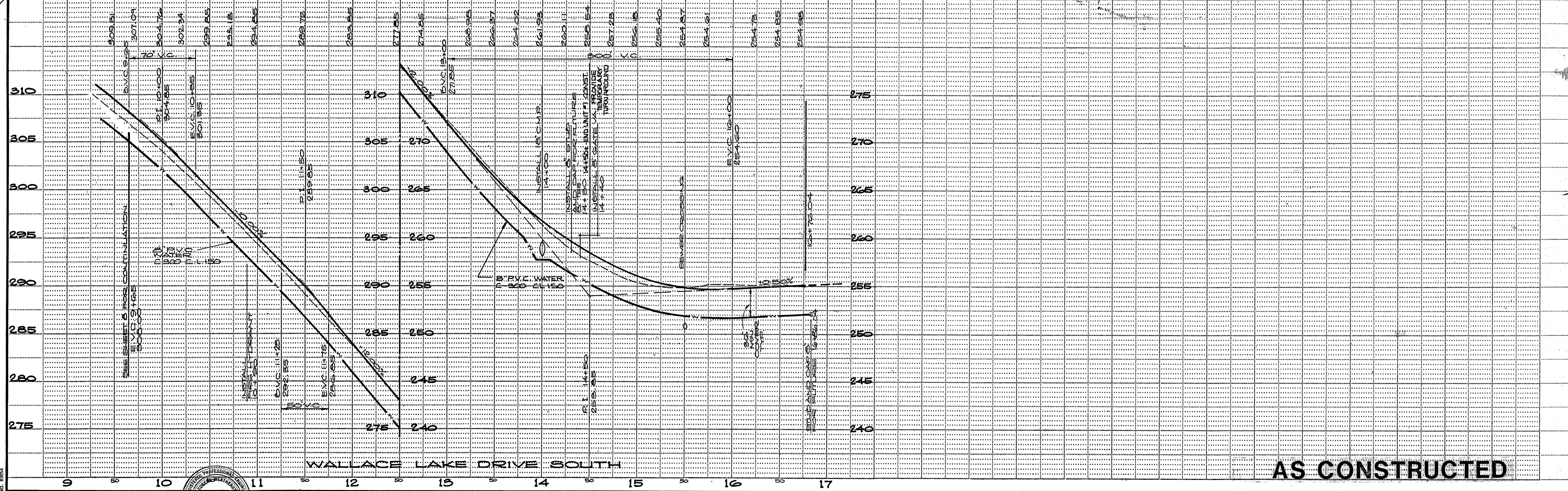
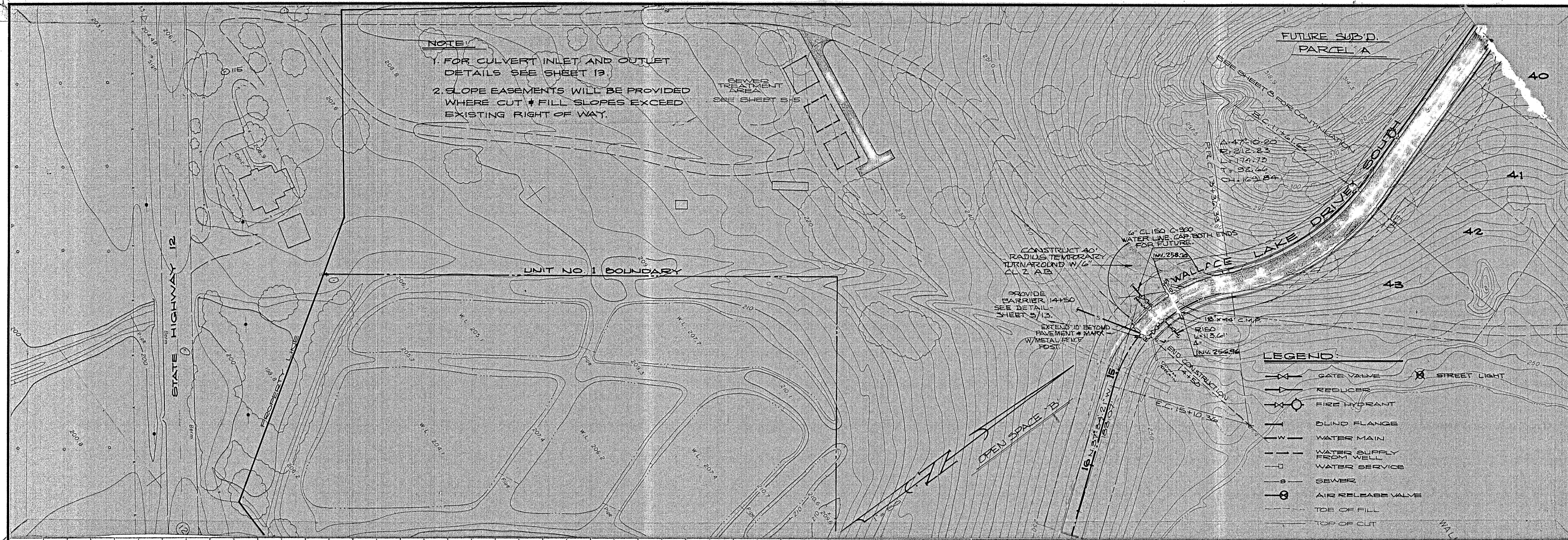
PREPARED BY: _____
 DRAWN BY: R.S.
 CHECKED: _____
 SUBMITTED BY: _____
 C. E. NO. 14774
 EXPIRES 3-31-89

REVISION	DATE	DESCRIPTION	BY	APPD.
1	4/10/81	AS CONSTRUCTED		

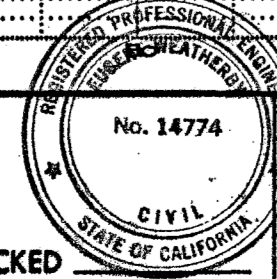
WEATHERBY ASSOCIATES INC.
 ENGINEERING - SURVEYING - PLANNING
 206 Peak Street, Jackson, CA. 95642
 209-223-0381 209-754-1137

WALLACE LAKE ESTATES
UNIT NO. 1
 CALAVERAS COUNTY, CALIFORNIA
PROFILES

DATE: 2-18-88
 SHEET: 11
 OF 18
 SCALE:
 1" = 50' HORIZ.
 1" = 5' VERT.
 FILE NO. D-3345



PREPARED BY: _____
 DRAWN BY: R.S. CHECKED: _____
 SUBMITTED BY: [Signature] C.E. NO. 14772
 EXPIRES: 3-31-59



REVISION	DATE	DESCRIPTION	BY	APPD.
1	9/8/49	AS CONSTRUCTED	RH	

WEATHERBY ASSOCIATES INC.
 ENGINEERING - SURVEYING - PLANNING
 206 Peck Street, Jackson, CA, 95642
 209-223-0381 209-754-1137

WALLACE LAKE ESTATES
UNIT NO. 1
 CALAVERAS COUNTY, CALIFORNIA
 W.L.D.S.O.

DATE	2-18-58
SHEET	12
FILE NO.	D-3345
OF 13	