

**WALLACE LAKE DRIVE (SECTION 1)**  
DISTANCE - 4 TO GAS MAIN

STATION	DISTANCE
3+00	6.67'
4+00	7.00'
5+00	8.50'
6+00	9.00'
7+00	7.50'
8+00	8.00'
9+00	9.00'
10+00	9.33'
11+00	12.00'
12+00	12.00'
13+00	10.25'

**TEAL COURT**  
DISTANCE - 4 TO GAS MAIN

STATION	DISTANCE	RT	LT
1+00	12.5'		
1+50	22.0'	RT	13.0' LT
1+75	23.0'	RT	23.25' LT
2+00	33.5'	RT	27.5' LT

**WALLACE LAKE DRIVE (SECTION 2)**  
DISTANCE - 4 TO GAS MAIN

STATION	DISTANCE
1+00	16.33'
2+00	16.0'

**CHUCKAR COURT**  
DISTANCE - 4 TO GAS MAIN

STATION	DISTANCE	RT	LT
1+00	13.0'		
2+00	12.0'		
2+25	20.0'		
2+50	32.0'		
2+80	30.0'	LT	
2+82	24.0'	RT	

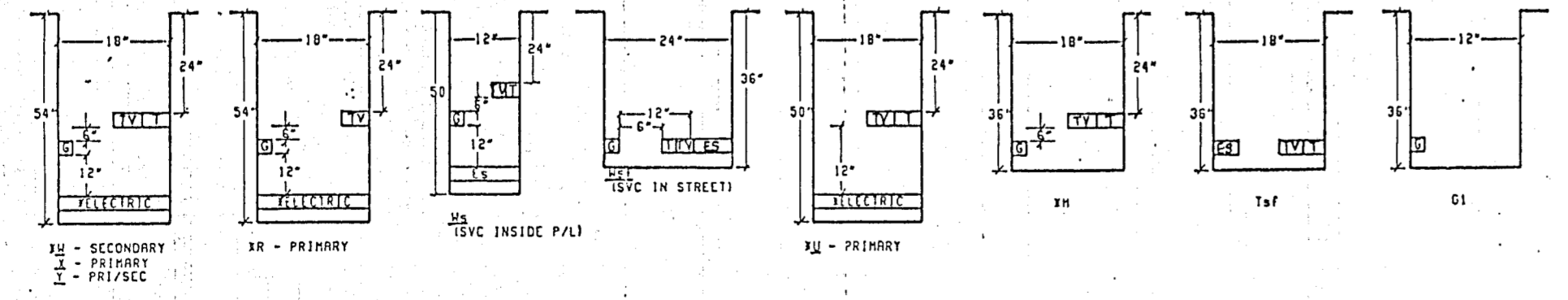
**WILLET COURT**  
DISTANCE - 4 TO GAS MAIN

STATION	DISTANCE
1+00	11.25'
2+00	11.00'
3+00	10.67'
4+00	11.00'
5+00	9.50'

**WALLACE LAKE DRIVE SOUTH**  
DISTANCE - 4 TO GAS MAIN

STATION	DISTANCE
1+00	3.0'
2+00	9.5'
3+00	9.5'
4+00	11.0'
5+00	11.5'
6+00	11.67'
7+00	12.0'
8+00	11.5'
9+00	11.5'
10+00	15.5'
11+00	16.33'

**JOINT TRENCH CONFIGURATIONS-TYPICAL**  
N. T. S.



- LEGEND:**
- GAS MAIN LINE
  - SERVICE RISER W/ VALVE
  - ④ GAS MAIN - SIZE AS NOTED
  - 4+60 15.0' : CENTERLINE STATION DISTANCE FROM SERVICE VALVE TO MAIN
  - EXISTING PAINTED CENTERLINES ON ROADWAY.

**GAS SYSTEMS ENGINEERING**  
design • contracting • maintenance  
P.O. BOX 28215 SACRAMENTO, CA 95828 (916) 486-1397  
**PROPANE GAS SYSTEM DISTRIBUTION FACILITIES**  
WALLACE LAKE ESTATES UNIT 1  
DRAWN: P.C. DATE: 7-11-90  
CHECKED: J.M.M. DATE: 02/22  
APPROVED: S.H.L. DATE: 02/22  
DWG NO: 0032

SHEET 1 OF 2

**WEATHERBY REYNOLDS CONSULTING ENGINEERS**  
206 PECK ST., JACKSON, CA 95642 (209) 223-0381  
(209) 754-1137 FAX # (209) 223-0716

CAMANCHE PARKWAY

0+00 WALLACE LAKE DRIVE (SECTION 1)

**NOTE:**  
ALL BEARINGS NOTED BASED ON COMPASS READING ONLY.

**GOSHAWK COURT**  
DISTANCE - 4 TO GAS MAIN

STATION	DISTANCE
1+00	5.25'
2+00	6.10'
3+00	6.00'
4+00	5.00'
4+80	35.00'

VALVE BOX W/ BLUE COVER  
TO TANK SITE

**NOTES:**

1. TRACER WIRE EXISTS THROUGHOUT ENTIRE SYSTEM.
2. ALL SERVICE LINES ARE 3/4" POLYETHYLENE.
3. ALL CENTERLINES NOTED ON PLANS REFER TO EXISTING PAINTED CENTERLINES ON ROADWAYS. CENTERLINE STATIONING BEGINS FROM CENTERLINE INTERSECTIONS.
4. THESE "AS-BUILT" DRAWINGS HAVE BEEN DEVELOPED FROM A COMPILATION OF THE FOLLOWING:
  - a) P.G. & E. "AS-BUILT" DRAWINGS
  - b) PACIFIC BELL "AS-BUILT" DRAWINGS
  - c) FIELD INSPECTOR DAILY REPORTS.
  - d) PHYSICAL IN FIELD VERIFICATION OF STEEL SERVICE RISER/VALVE LOCATIONS.
5. TRENCH LOCATIONS ARE APPROXIMATE ONLY AND SHOULD BE VERIFIED VIA TRACER WIRE PRIOR TO ANY EXCAVATION AS TO AVOID CONFLICTS. BEFORE DIGGING CONTACT THE FOLLOWING:
  - U.S.A. : 1-800-642-2444
  - W.U.U.A. : 1-800-424-3447
  - CAMPORA PROPANE SERVICE : 1-209-466-4088
6. LOCATION OF SERVICE RISERS SHOWN ON THIS PLAN ARE RELATIVE TO FRONT PROPERTY CORNERS.

**WALLACE LAKE ESTATES UNIT 1**

SCALE: 1" = 100'

**WALLACE LAKE DRIVE (SECTION 2)**  
DISTANCE - G TO GAS MAIN

STATION	DISTANCE
3+00	14.5'
4+00	12.0'
5+00	13.0'
6+00	12.5'
7+00	13.5'
8+00	13.25'
9+00	13.0'
10+00	12.0'

**VERDIN COURT**  
DISTANCE - G TO GAS MAIN

STATION	DISTANCE
1+00	12.5'
1+55	12.5'
2+00	11.0'
2+45	22.0' RT
2+54	33.0' LT
2+74	26.0' RT
	23.0' LT

**WALLACE LAKE DR. TO FUTURE**  
DISTANCE - G TO GAS MAIN

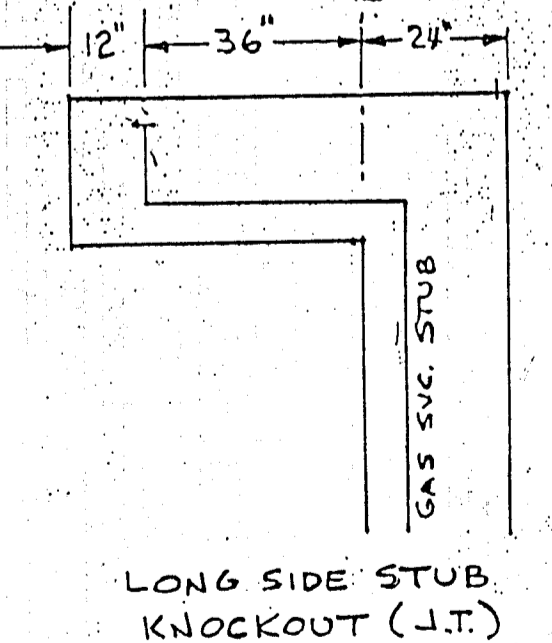
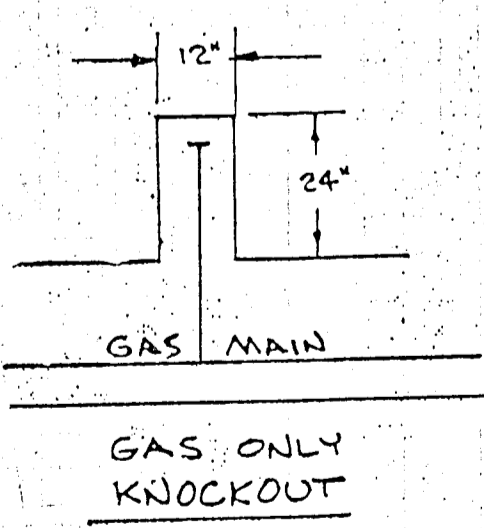
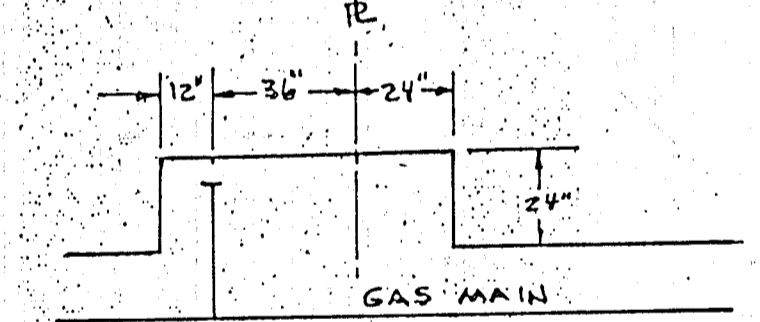
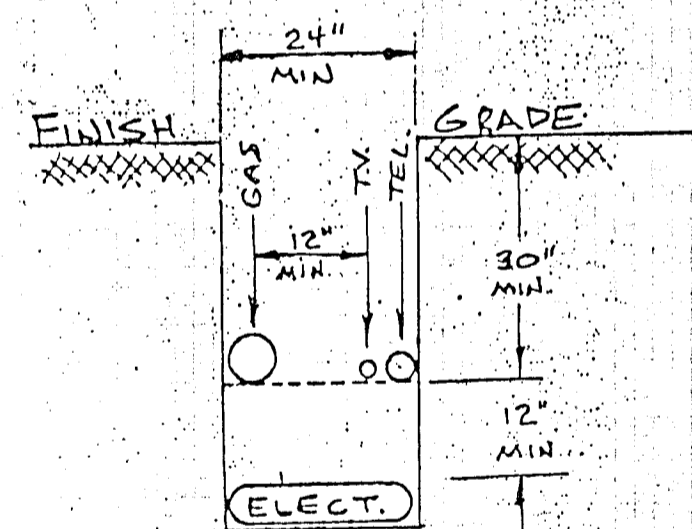
STATION	DISTANCE
1+00	16.0'
2+00	20.0'
3+00	13.5'
4+00	14.25'
4+87	14.25'

**CORMORANT DRIVE**  
DISTANCE - G TO GAS MAIN

STATION	DISTANCE
1+00	12.5'
2+00	13.5'
3+00	12.0'
4+00	12.0'
5+00	12.0'
6+00	13.0'
7+00	11.0'
8+00	10.5'
9+00	12.5'
10+00	12.0'
10+65	14.5'
11+00	13.0'

**TURNSTONE COURT**  
DISTANCE - G TO GAS MAIN

STATION	DISTANCE
1+00	15.0'
2+00	14.5'
3+00	14.5'
4+00	13.5'
5+00	11.5'
6+00	11.0'
7+00	10.5'
8+00	13.0'
8+25	14.0'
8+70	23.0'
8+84	33.0' LT, 32.0' RT
9+00	37.0' LT, 38.0' RT
9+29	33.0' LT
9+34	25.0' RT



**NOTES:**

- 1) SAND REQUIREMENTS: 4" UNDER 1/2" OVER ALL GAS FACILITIES.
- 2) ALL GAS STUB SERVICES SHALL BE 3/4" IPS (POLYETHYLENE)
- 3) ALL WORK TO BE IN ACCORDANCE WITH P.G. & E. STANDARDS AND SPEC'S.
- 4) CONTRACTOR TO INSTALL CONDUIT XINGS ON MAIN & STUB SVC XINGS.
- 5) CONTRACTOR TO COORDINATE ALL TREUCHING & INSTALLATION WITH P.G. & E. REPRESENTATIVE.
- 6) SEE "SPECIFIC CONDITIONS FOR GAS MAIN & SERVICE INSTALLATION WORK;" FOR MATERIALS & VENDORS APPROVED LISTS.

**LEGEND:**

- - - - - : GAS MAIN LINE
- : SERVICE RISER W/ VALVE
- 4" : GAS MAIN - SIZE AS NOTED
- 4+60 : CENTERLINE STATION
- 15.0' : DISTANCE FROM SERVICE VALVE TO MAIN
- : EXISTING PAINTED CENTERLINES ON ROADWAY

**GAS SYSTEMS ENGINEERING**  
Design • Contracting • Equipment

PROANE GAS SYSTEM  
DISTRIBUTION FACILITIES  
WALLACE ESTATES NO. 1

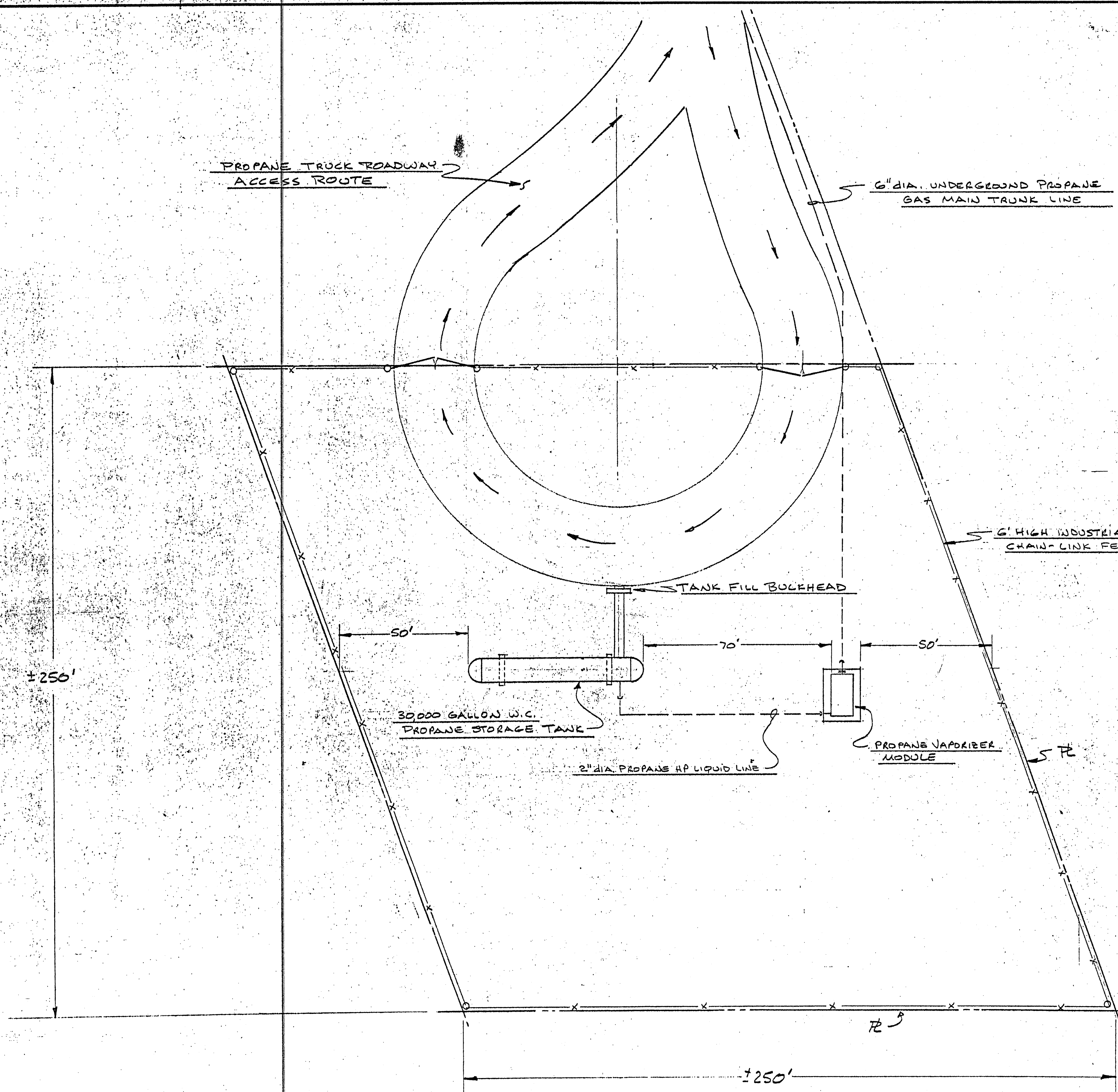
BRUNN R.C. UNIT 7-11-90  
CHECKED: JRG NO. 0032  
APPROVED: SCALE SHOWN  
DWG NO. 0032

**WALLACE LAKE ESTATES**  
UNIT 1

**WEATHERBY REYNOLDS**  
CONSULTING ENGINEERS

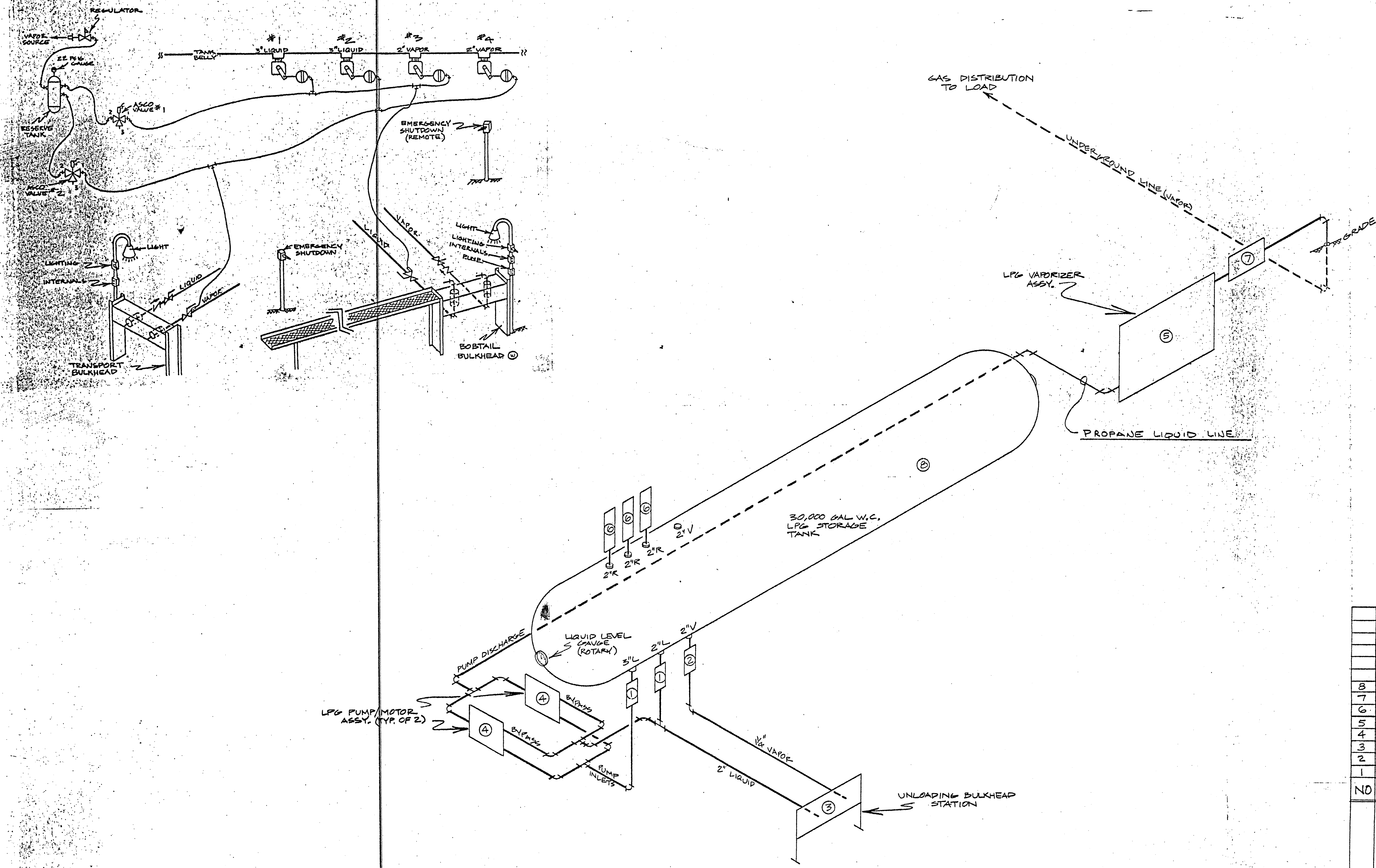
206 PEER ST., JACKSON, CA 95642 (209) 223-0281  
(209) 784-1157 FAX # (209) 225-0716





GAS SYSTEMS ENGINEERING			
8401 GERBER RD. SACRAMENTO, CA 95828			
SCALE: 1" = 20'	APPROVED BY:	DRAWN BY L.K.	
DATE: 7-11-90		REVISED RC	
WALLACE LAKE ESTATES			
PROPANE GAS STORAGE & VAPORIZATION FACILITY			
PLOT PLAN - AERIAL VIEW			DRAWING NUMBER
			E-71





8	ES-T-007	TANK TRIM FITTINGS
7	ES-R-004	FISHER 1098/1098R REGULATOR MODULE
6	ES-T-012	TANK TRIM-3'RELIEF STACK
5	ES-V-005	VAPORIZER MODULE
4	ES-P-002	VAPORIZER PUMP MODULE
3	ES-B-001	UNLOADING BULKHEAD
2	ES-T-003	1/4" TANK TRIM 1/4" INTERNAL VALVE
1	ES-T-002	2" TANK TRIM 1/2" INTERNAL VALVE

NO	DATE	REVISION	BY

GAS SYSTEMS ENGINEERING - 8451  
 GERBER RD. P.O. BOX 28215 SACTO, CA 95828

SCALE: NONE APPROVED BY: DRAWN BY: L.K.  
 DATE: 9-19-89 REVISED: RC

STANDARD CONCEPT PLAN  
 PROPANE STORAGE & VAPORIZATION FACILITY

LPG SYSTEM PIPING CONCEPT GSE-0032-

D-3546-A



WINTER	
INSUL. DIST.	0
LTO. AREA	3
VOLT. AREA	2
LOADING	L
GRASSLANDS	

**GAS SYSTEM NOTES:**  
 1) FOR TRENCH DETAILS AND NOTES REFER TO SHEET 2 OF 3.  
 2) FOR INSTALLATION STANDARDS REFER TO GAS SYSTEM SPECIFICATIONS BOOK.

**NOTES**

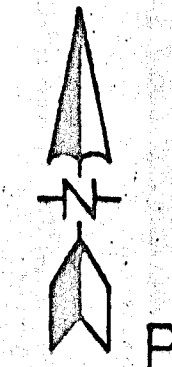
**DEVELOPER'S RESPONSIBILITIES**  
 PROVIDE ALL CONDUITS, EXCAVATING, TRENCHING, AND BACKFILL. PROVIDE SUITABLE LOCATIONS FOR THE DISTRIBUTION SYSTEM WITH PHYSICAL PROTECTION FOR PRODUCE TRANSFORMERS OR SUBSURFACE EQUIPMENT FROM SOIL EROSION, OR VEHICULAR TRAFFIC. INSTALL DRAINER POSTS IF REQUIRED. INSTALL STREET LIGHTS AND CONDUIT TO CONNECTION POINTS. COORDINATE ALL FACILITIES FOR JOINT TRENCH INSTALLATION.

**ENGINEER'S RESPONSIBILITIES**  
 THE DISTRIBUTION SYSTEM INCLUDING PRIMARY AND SECONDARY CONDUITS, RISER MATERIAL, SPLICE BOXES, PADMOUNTED TRANSFORMERS, SWITCHES, CONNECTIONS, ETC. PERFORM ALL WORK WITHIN 200' OUTSIDE THE DEVELOPMENT BOUNDARIES PER RULE 15.1. PERFORM WORK BEYOND 200' PER RULE 1504 DIFF. IN COST. INSPECT DEVELOPER'S TRENCHING AND CONDUIT INSTALLATION.

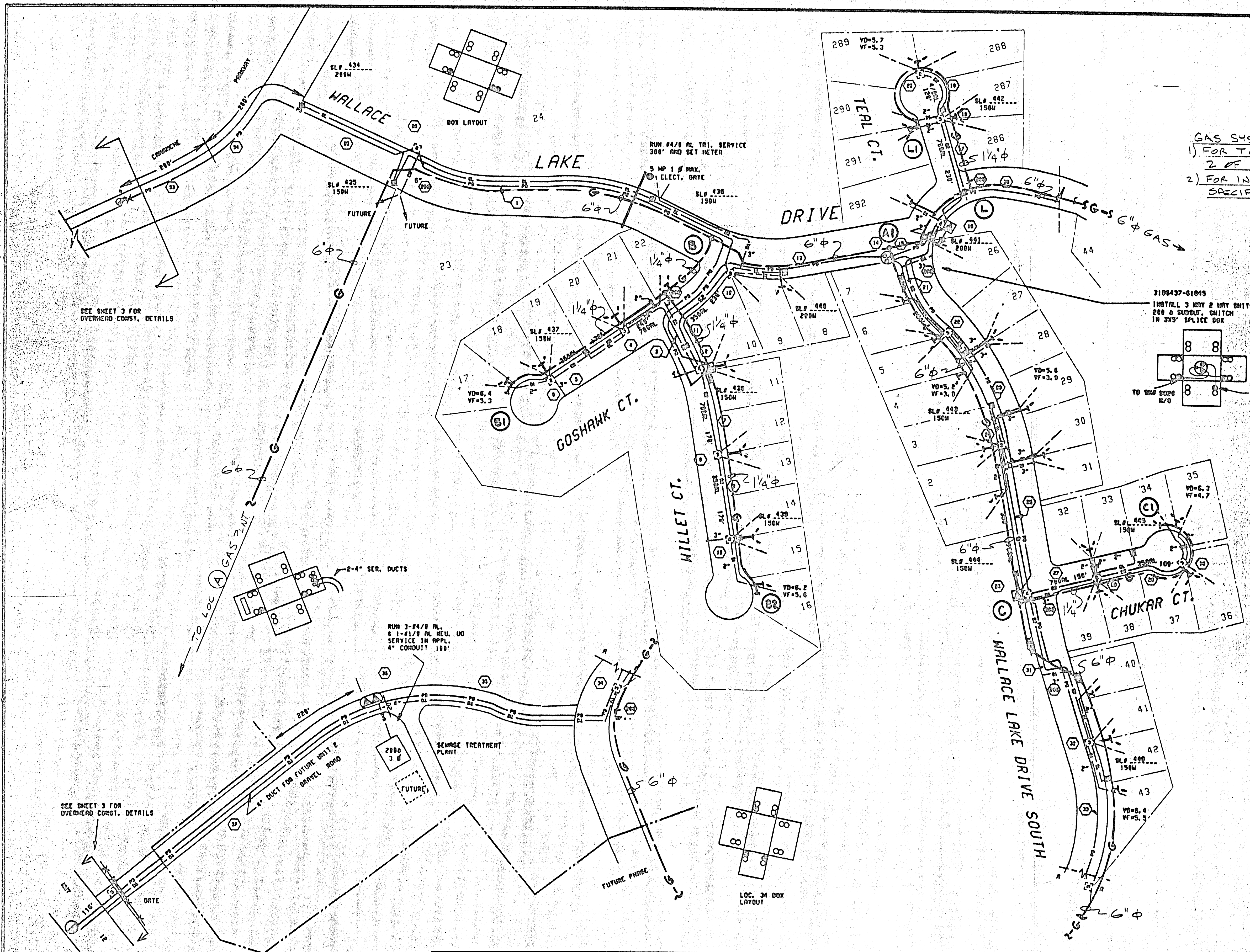
TRANSFORMER DATA TABLE						
BENCH LOC.	TYP #	TYPE	KVA	#	COORDINATE #	
2	10202	POST	75	15	111	03
10	10204	POST	75	14	104	05
16	10204	POST	100	10	123	111
35	10210	POST	25/10	1	75	10

PROPOSED	DESCRIPTION
— 3	3 PHASE PRIMARY CONDUCTOR/CABLE - SIZE AS NOTED
— 2	SECONDARY TRIPLEX DO CABLE AS NOTED
— S	SERVICE CONDUCTOR/CABLE - SIZE AS NOTED - FUTURE
— L	STREETLIGHT COND./CABLE - AS PL DUPL. DO CUST. INSTALLED
— C	CONDUIT - SIZE AND TYPE AS NOTED BY CUST.
⊠	17" X 30" SECONDARY SPLICE BOX
⊠	24" X 36" SECONDARY SPLICE BOX
⊠	30" X 48" SECONDARY SPLICE BOX
⊠	3" X 5" PRIMARY SPLICE BOX
⊠	PADMOUNT TRANSFORMER - 1 PHASE OR 3 PHASE AS NOTED
⊠	3 ♂ SUBSUR. DUPL. TRANSFORMER IN 3X5' BOX
⊠	STREET LIGHT LUMINAIRE - L62-A APPLICANT INSTALLED
⊠	SUBSURFACE 3 WAY 2 WAY SWITCHED IN 3 X 5 BOX

**GAS SYSTEMS ENGINEERING**  
 design • contracting • equipment  
 70 BOX 28215 SACRAMENTO, CA 95828 (916) 466-1597  
**PROPANE GAS SYSTEM**  
**DISTRIBUTION FACILITIES**  
**WALLACE ESTATES NO. 1**  
 DRAWN: RC DATE: 7-11-90  
 CHECKED: JSS NO: 0032  
 APPROVED: JSS SCALE SHOWN: DATE: 07/11/90  
 DWG NO: 0032



P3-18



SEE SHEET 3 FOR OVERHEAD CONST. DETAILS

SEE SHEET 3 FOR OVERHEAD CONST. DETAILS

NO.	DATE	DESCRIPTION	CH/SPEC	DWN.	CHKD.	SUPV.	APVD.	BY	NO.	DATE	DESCRIPTION	CH/SPEC	DWN.	CHKD.	SUPV.	APVD.	BY
REVISIONS																	

APPROVED BY	CH 4026450
SUPV.	RSC
DWGN.	JSS
CHKD.	JSS
DATE	5-0-90
SCALE	1"=100'

**WALLACE ESTATES**  
UNIT 1

**PACIFIC GAS AND ELECTRIC COMPANY**  
SAN FRANCISCO, CALIFORNIA

BILL OF MATL	DWG LIST	D: WALLACE1
SUPSDS	SUPSDS	
SUPSDS BY	SHEET NO.	1 OF 3 SHEETS
0731E19536	REV.	

D-3546-A



CAMANCHE PARKWAY

RUN 3/4" TRI. LG. SERVICE IN APPL. 3" CONDUIT 100' TO ELECTRIC GATE

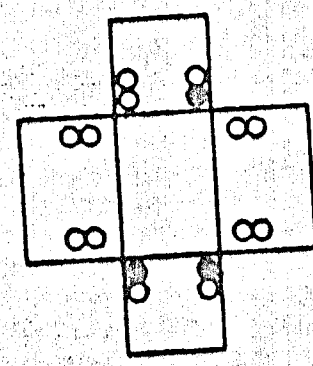
WALLACE LAKE DRIVE NORTH

INSTALL 3" PL VALVE PER SPEC'S

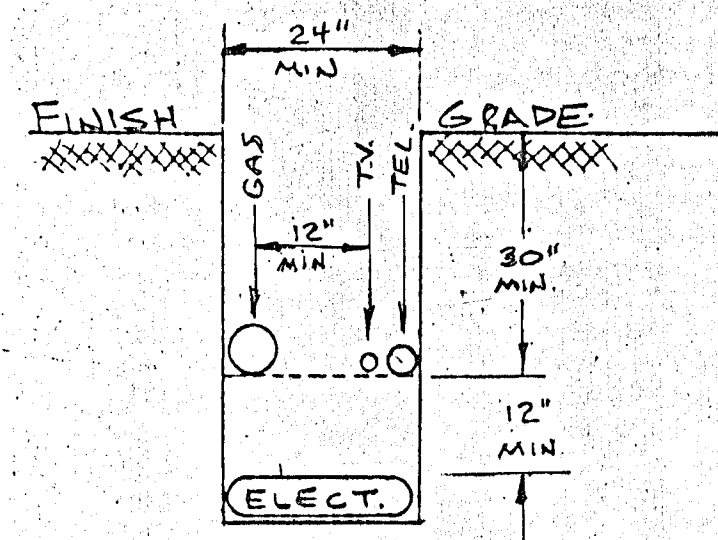
FUTURE PHASE

FUTURE SEC. DUCT WHIMBREL DRIVE

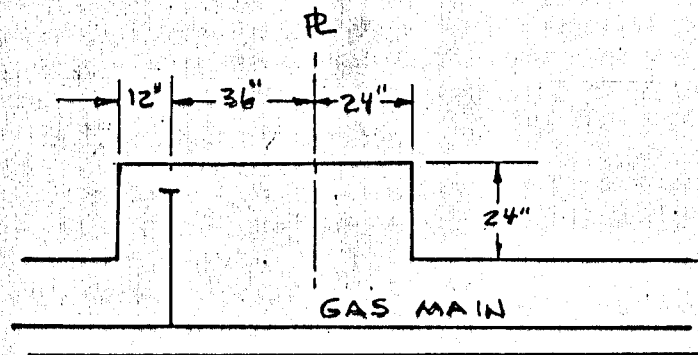
SL# 459 150M



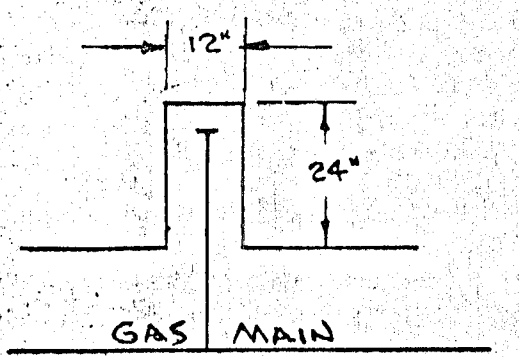
BOX LAYOUT LOC. 85



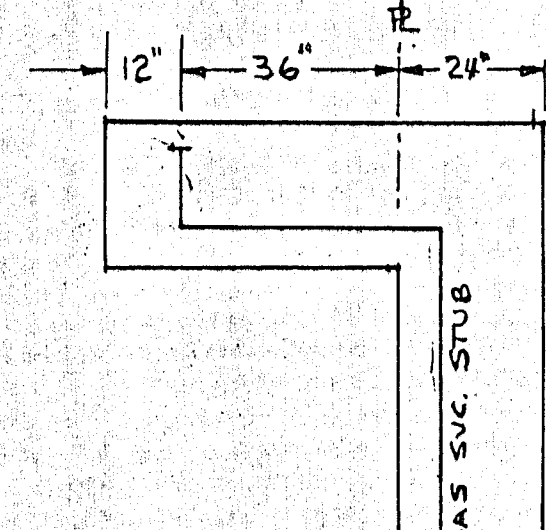
TRENCH DETAILS



SHORT SIDE STUB KNOCKOUT (J.T.)



GAS ONLY KNOCKOUT

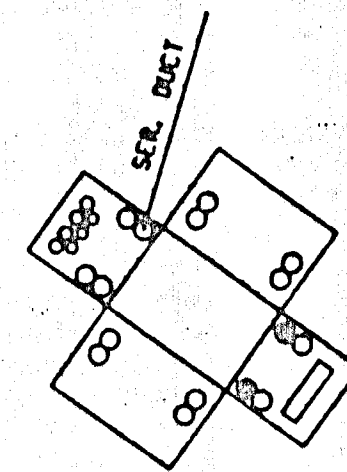


LONG SIDE STUB KNOCKOUT (J.T.)

PROPOSED GAS MAIN  
W/ #14 CU. LOCATOR WIRE

NOTES:

- 1) SAND REQUIREMENTS: 4" UNDER & 6" OVER ALL GAS FACILITIES.
- 2) ALL GAS STUB SERVICES SHALL BE 3/4" IPS
- 3) ALL WORK TO BE IN ACCORDANCE WITH P.G. & E. STANDARDS AND SPEC'S.
- 4) CONTRACTOR TO INSTALL CONDUIT XINGS ON MAIN & STUB SVC XINGS.
- 5) CONTRACTOR TO COORDINATE ALL TRENCHING & INSTALLATION WITH P.G. & E. REPRESENTATIVE.
- 6) SEE "SPECIFIC CONDITIONS FOR GAS MAIN & SERVICE INSTALLATION WORK" FOR MATERIALS & VENDORS APPROVED LISTS.



LOC. 48 BOX LAYOUT

RUN 3/4" TRI. LG. & 1-1/2" PL. NEU. SERVICE 210' IN APPL. 4" DUCT

MATCH LINE TO SHEET 1

SL# 447 150M

SL# 449 200M

SL# 448 150M

SL# 449 200M

SL# 448 150M

SL# 449 200M

SL# 448 150M

SL# 449 200M

SL# 448 150M

SL# 449 200M

SL# 448 150M

SL# 449 200M

SL# 448 150M

SL# 449 200M

SL# 448 150M

SL# 449 200M

SL# 448 150M

SL# 449 200M

SL# 448 150M

SL# 449 200M

SL# 448 150M

SL# 449 200M

SL# 448 150M

SL# 449 200M

SL# 448 150M

SL# 449 200M

WALLACE

WALLACE

LAKE

WALLACE

TURNSTONE CT.

TURNSTONE CT.

TURNSTONE CT.

TURNSTONE CT.

TURNSTONE CT.

TURNSTONE CT.

TURNSTONE CT.

TURNSTONE CT.

DR.

SL# 497 200M

SL# 455 150M

SL# 455 150M

SL# 459 200M

SL# 459 200M

SL# 459 200M

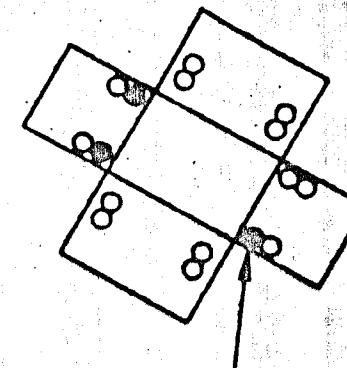
SL# 459 200M

SL# 459 200M

SL# 459 200M

SL# 459 200M

FUTURE PHASE



LOC. 88 BOX LAYOUT

INSTALL 6" PL VALVE PER SPEC'S

TRANSFORMER DATA TABLE							
SKETCH LOC.	TFR #	TYPE	KVA	# CUST.	PHASE	COORDINATE #	
46	10211	POINT	50	13	00	08	3105317-01025
48	10205	BUOY	25/10	1	24	28	3105317-01073
56	10260	POINT	30	12	00	74	3105303-01027
60	10207	POINT	75	17	105	120	3105303-01020
74	10258	POINT	50	12	00	74	3105303-01025
83	10290	POINT	75	1	5	5	3105370-01025

**GAS SYSTEMS ENGINEERING**  
design • contracting • equipment

PO BOX 28215 SACRAMENTO CALIFORNIA 95828-2157

**PROPANE GAS SYSTEM DISTRIBUTION FACILITIES WALLACE ESTATES NO. 1**

DESIGNED BY: RC DATE: 7-11-90  
CHECKED BY: JRS JOB NO: 0032  
APPROVED BY: O.K. SCALE: SHOWN  
DWG. NO: 0032-

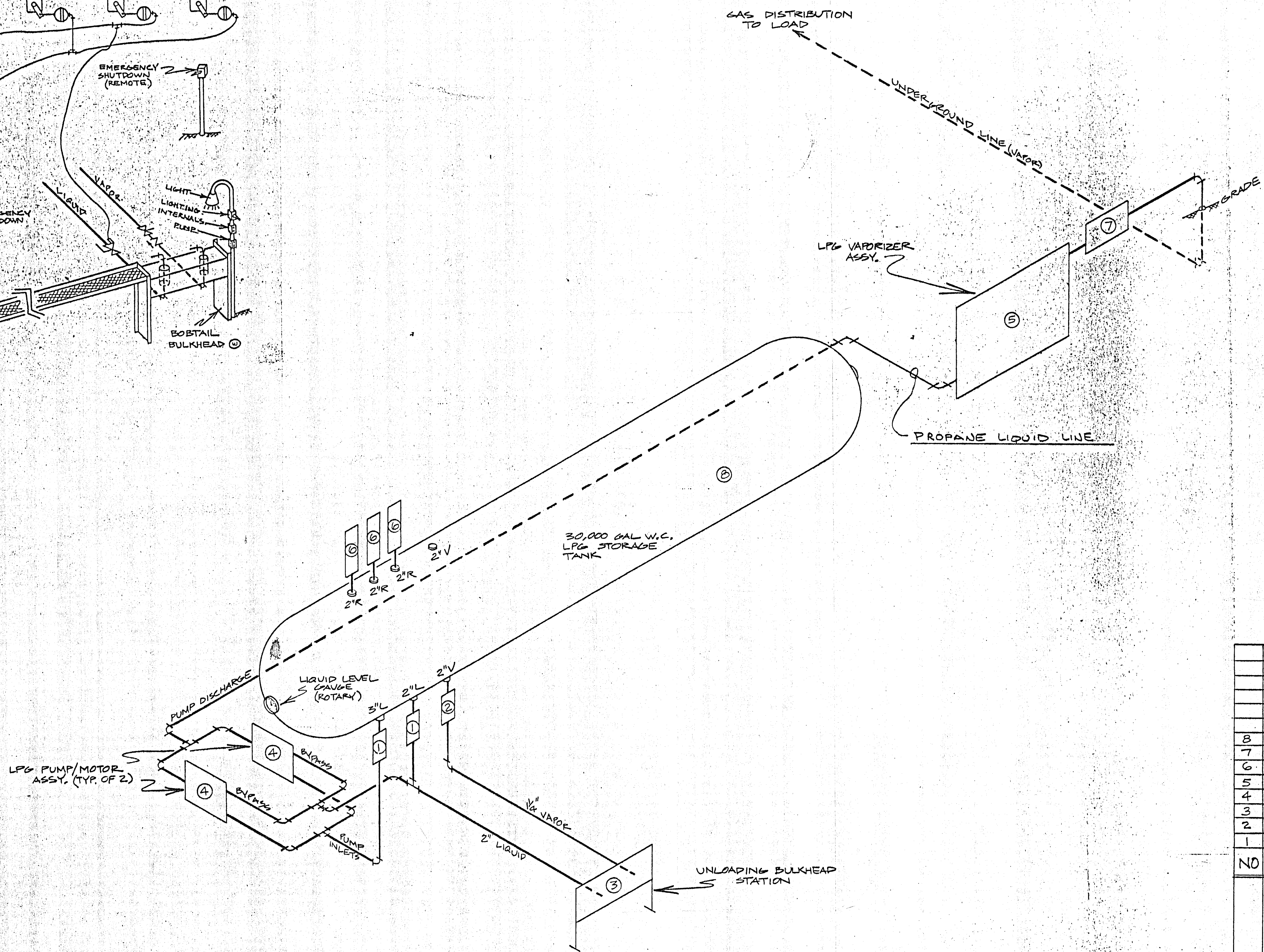
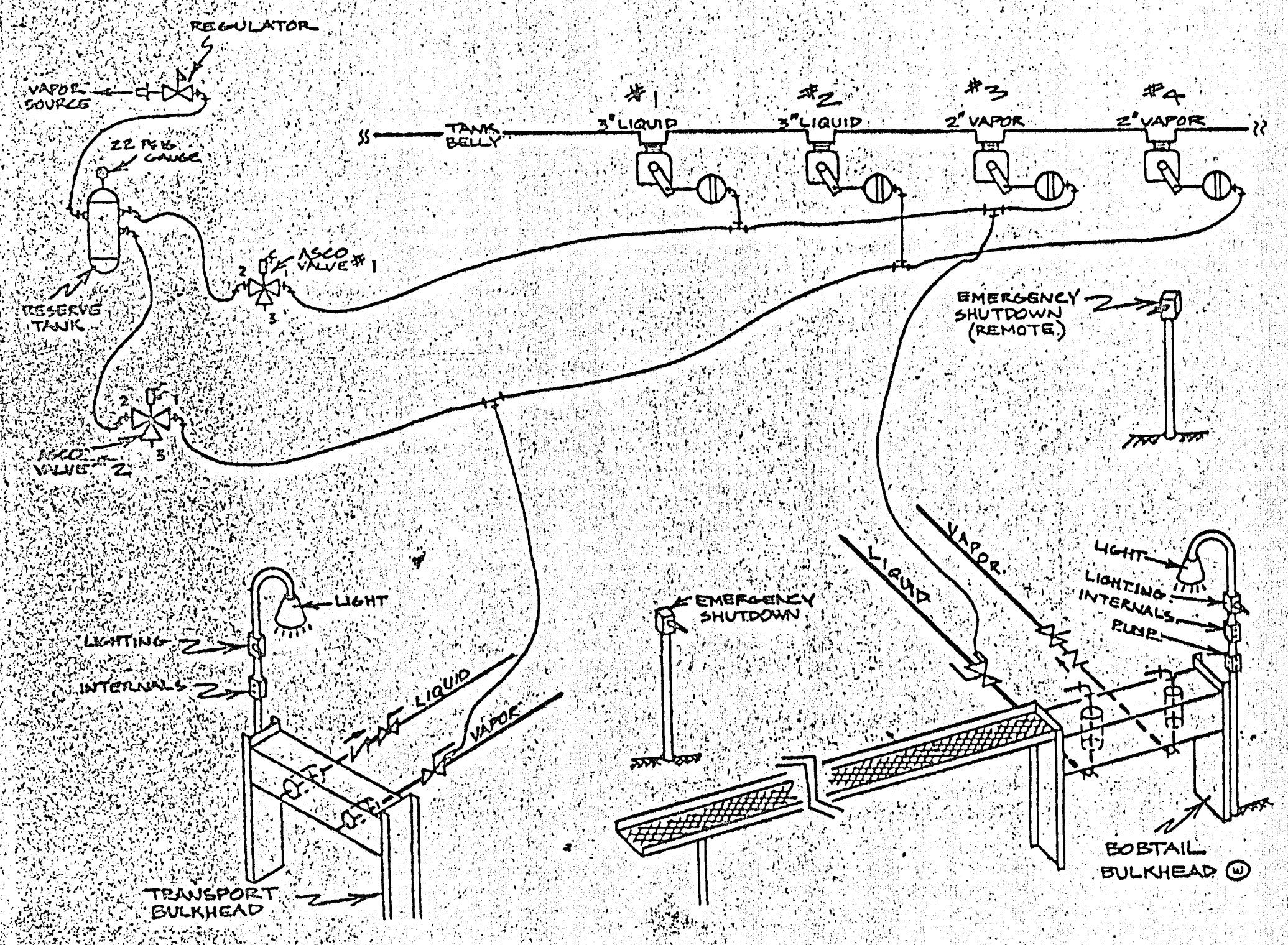


P3-18

NO. DATE		DESCRIPTION		CHG./SPEC. DWN.		CHKD. SUPV.		APVD. BY		NO. DATE		DESCRIPTION		CHG./SPEC. DWN.		CHKD. SUPV.		APVD. BY		APPROVED BY: CH 4026459	<b>WALLACE ESTATES UNIT 1</b> PACIFIC GAS AND ELECTRIC COMPANY SAN FRANCISCO, CALIFORNIA	BILL OF MATL DWG LIST: D:WALLACE SUPSOS SUPSOS BY: SHEET NO. 8 OF 9 SHEETS REV. 0731E19536
REVISIONS										REVISIONS										DATE: 5-10-90		SCALE: 1"=100'

D-3546A

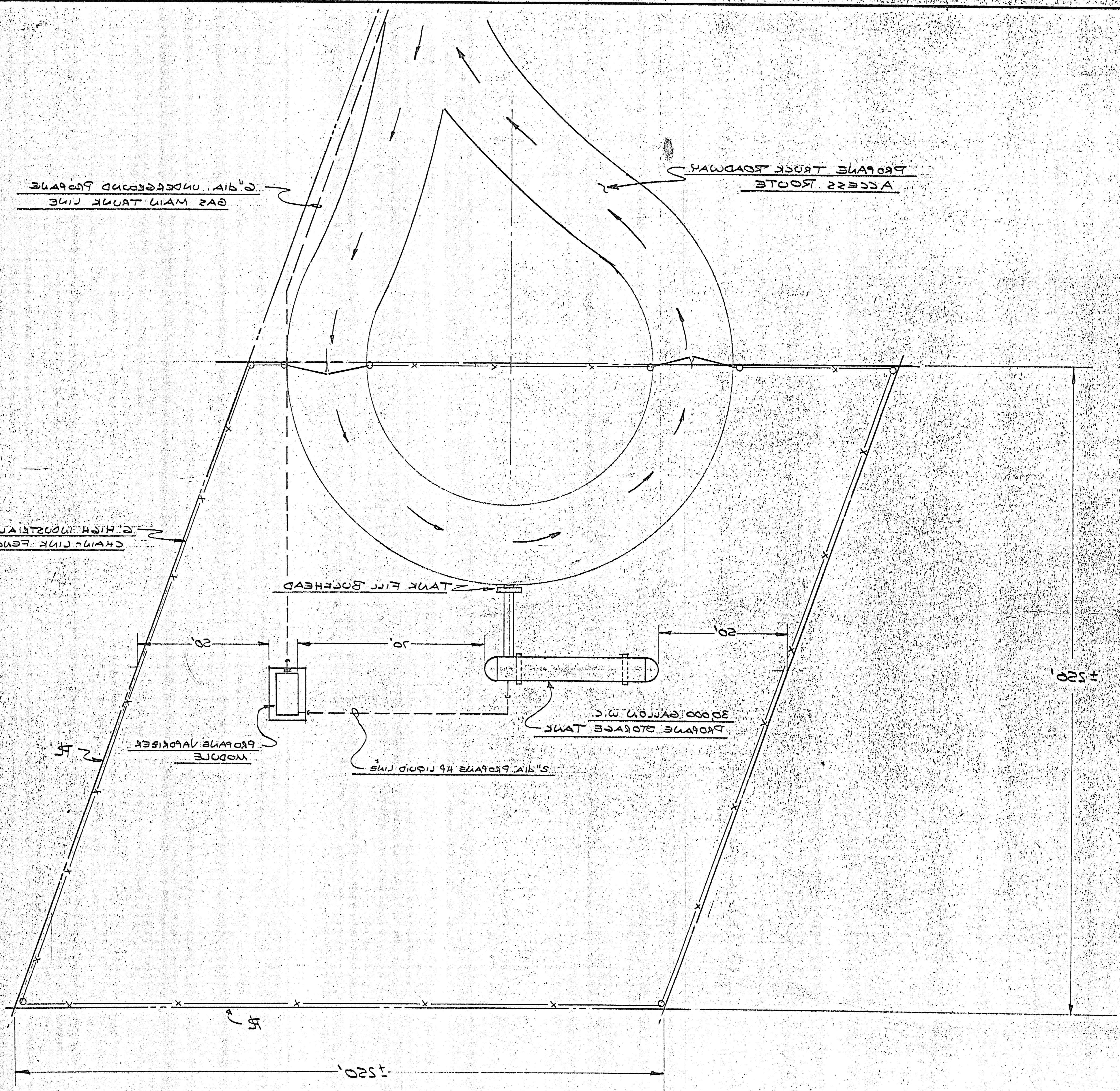




NO	DATE	REVISION	BY
8		ES-T-007 TANK TRIM FITTINGS	
7		ES-R-004 FISHER 1098/1098R REGULATOR MODULE	
6		ES-T-012 TANK TRIM-3' RELIEF STACK	
5		ES-V-005 VAPORIZER MODULE	
4		ES-P-002 VAPORIZER PUMP MODULE	
3		ES-B-001 UNLOADING BULKHEAD	
2		ES-T-003 1/4" TANK TRIM 1/4" INTERNAL VALVE	
1		ES-T-002 2" TANK TRIM 1/2" INTERNAL VALVE	
NO	DWG. NO.	COMPONENT	

NO	DATE	REVISION	BY
GAS SYSTEMS ENGINEERING - 8451 GERBER RD. P.O. BOX 28215 FALTO, CA 95828			
SCALE: NONE	APPROVED BY:	DRAWN BY L.K.	
DATE: 9-19-89		REVISED RC	
STANDARD CONCEPT PLAN PROPANE STORAGE & VAPORIZATION FACILITY			
LPG SYSTEM PIPING CONCEPT			





GAS MAIN TANK LINE  
6" DIA. UNDERGROUND PROPANE

PROANE TRUCK ROADWAY  
ACCESS ROUTE

CHAIN-LINK FENCE  
6' HIGH WOODEN GRADE

TANK FILL BOOMHEAD

PROANE STORAGE TANK  
3000 GALLON W.C.

PROPANE VAPORIZER  
MODULE

5" LIQ. PROPANE HP LIQUID LINE

±520'

±520'



D-3248-A	
PROANE GAS STORAGE & VAPORIZATION FACILITY	DATE: 5-11-90
MICALACE LAKE ESTATES	SCALE: 1" = 20'-0"
ENGINEERING	APPROVED BY: [Signature]
8401 GERRARD RD., SACRAMENTO, CA 95828	DRAWN BY: [Signature]
GAS SYSTEMS ENGINEERING	REVISIONS:

*Pass  
Ackwards*